

Multi-Echo EPI

Works-in-Progress package
Version 2.1

For the
SIEMENS Magnetom under VA21B/VA23A



Installation and User's Guide
NUMARIS/4A21
NUMARIS/4A23

August 27th, 2003

Section of Medical Physics, University Hospital Freiburg, Germany
Contact:
Oliver Speck PhD, Hugstetterstr. 55, D 79106 Freiburg,
email: oliver.speck@uniklinik-freiburg.de, phone: +49 761 2703832



Table of Contents

1	Basic principles	3
1.1	Principle of Multi-Echo EPI	3
1.2	Image contrast of Multi-Echo EPI	3
1.3	Processing options	4
1.4	References	4
2	Software Installation Procedure	5
2.1	Installation	5
3	Sequences and Protocols	6
3.1	General Remarks.....	6
3.2	New Parameters	6
3.3	Remarks on reconstruction performance.....	8
3.4	Protocols.....	8



1 Basic principles

1.1 Principle of Multi-Echo EPI

The basic timing scheme of Multi-Echo EPI is shown in Figure 1. It is based on the original EPI sequence proposed by Mansfield (1). After a single RF-excitation, n complete EPI images are acquired in a single shot. The phase gradient is rewound to the original starting position after each echo-image to ensure identical k-space trajectories for all echo-images (2).

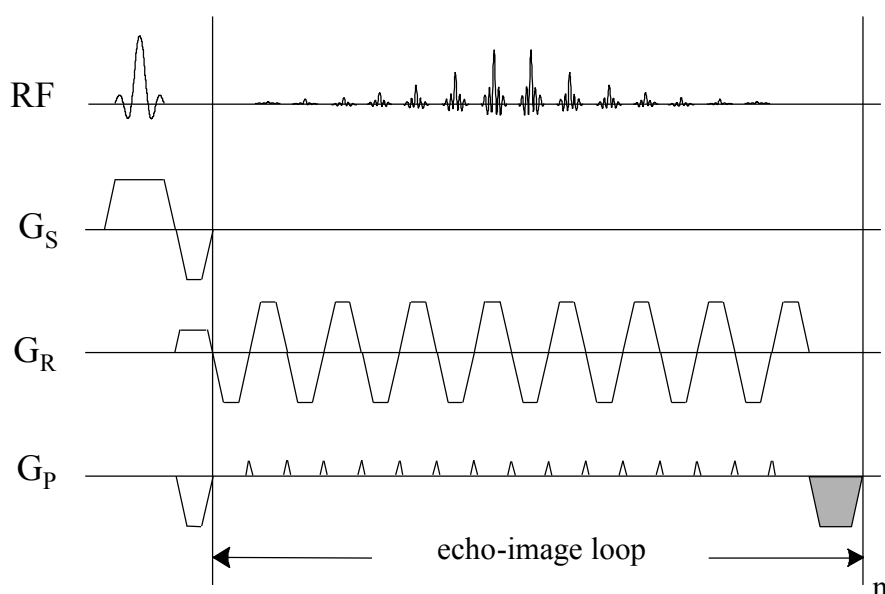


Figure 1 – Basic timing of the Multi-Echo EPI sequence. The shaded gradient in phase encoding direction ensures identical k-space trajectories for all echo-images.

The resulting echo-images have different increasing echo times and thus T2*-weighting. The single echo-images correspond to standard gradient echo EPI images with the same echo time.

1.2 Image contrast of Multi-Echo EPI

The signal intensity of the single echo images of the Multi-Echo EPI sequence is simply given by:



$$S \approx S_0 \exp(-TE/T_2^*)$$

where S_0 is the signal intensity at echo time 0, which corresponds to the proton density for long repetition times TR , and TE is the echo time. Therefore, the echo times of the different echo-images should be on the order or less than the tissue T_2^* . Parametric images of the proton density and T_2^* can be obtained by fitting a model function to the signal intensities at the different echo times (3). Please see the processing options described below.

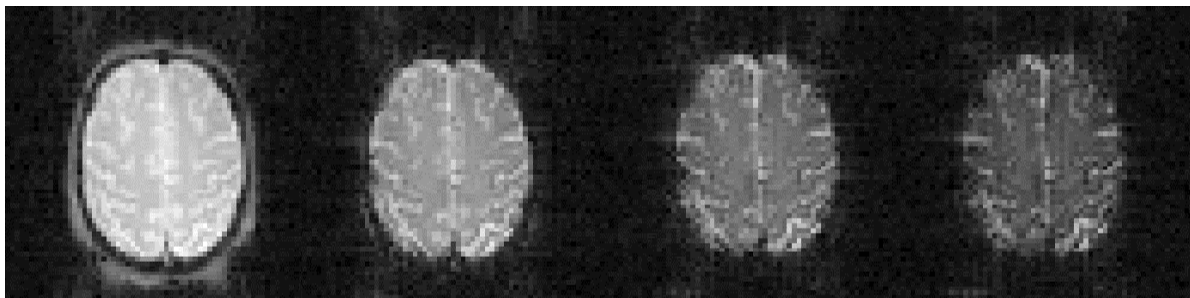


Figure 2 – Head images acquired on Magnetom TRIO with the Multi-Echo EPI sequence with 4 different echo times in a single shot.

1.3 Processing options

Several processing options are given in the method. The different echo images are always saved separately as the original images and optionally parametric maps can be calculated in the reconstruction. In addition, online 3D-motion correction (even prospective – PACE) and t-test can be performed. Please see sequence and protocols for details.

1.4 References

1. P. Mansfield, A.A. Maudsley. Planar Spin Imaging. J. Magn. Reson. 27, 101 (1977)
2. O. Speck, J. Hennig. Functional Imaging by I_0 - and T_2^* -Parameter Mapping using Multi-Image-EPI. Magn. Reson. Med. 40(2), 243-248 (1998)
3. O. Speck, T. Ernst, L. Chang. Bi-exponential modeling of multi gradient echo data of the brain. Magn. Reson. Med. 45(6), 1116-1121 (2001)
4. O. Speck, J. Hennig. Motion Correction of Parametric fMRI Data from Multi-Slice Single-Shot Multi-Echo Acquisitions, Magn. Reson. Med. 46(5): 1023-1027 (2001)



2 Software Installation Procedure

2.1 Installation

The sequence consists of 5 files. The sequence file for the host, the sequence file for the MPCU and the ICE (EVA) program.

Copy the sequence .dll-file for the host to the customer sequence directory:

```
copy os_mepi2d_VA21.dll %CustomerSeq%\MedCom\MriCustomer\seq\
```

Copy the sequence file for the MPCU to the corresponding sequence directory:

```
copy os_mepi2d_VA21.m750 %CustomerSeq%
```

Alternatively, the a protocol can be imported using the Exam Explorer. Select 'Import' and then the 'MEPI_VA21.edx' file. In this case no protocol has to be created (see last step). However, the EVA program and protocol have to be copied (next steps).

!!Attention!! This is only correct for systems with Reco-PC and m750 MPCU! Otherwise, copy the relevant MPCU file to the corresponding directory. Software does not run on Alpha reconstruction machines.

CoilSelectManipulator.h ist ein noch fehlendes File in
C:\idea\n4\comp\Measurement\CCSpuSer\CoilInterface.

Copy the EVA program .dll-files to the customer EVA directory:

```
copy MotionCorrDecorator.dll q:\bin  
copy MosaicDecorator.dll q:\bin
```

Copy the EVA protocol :

```
copy t-test_10B10A_moco_mepi.evp  
C:\MedCom\MRICustomer\EvaDefProt\Bold
```

Create a new default protocol:

Open the Exam Explorer, select a Protocol location, select 'Insert ... Sequence', select 'Folder: USER', select 'os_mepi2d_VA21', click 'Insert'.

Double click the new protocol and adjust the parameters as desired.

The first two and the last steps have to be repeated for the os_mepi2d_pace_VA21 sequence for prospective motion correction, if obtained.



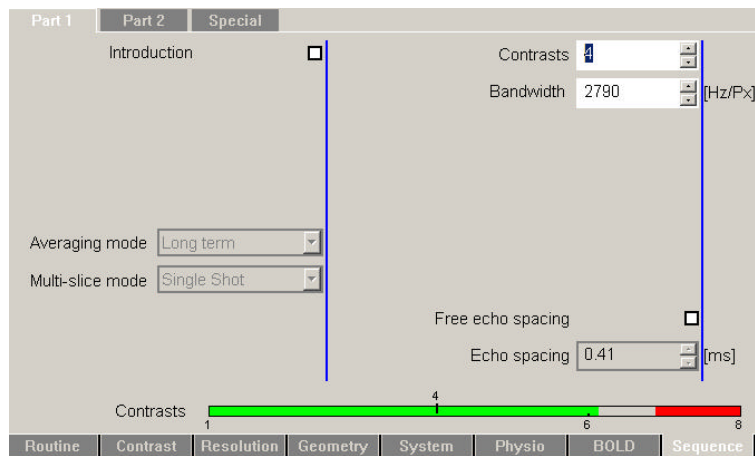
Sequences and Protocols

2.2 General Remarks

Since the sequence is derived from the standard EPI sequence, most of the user interface and features are identical to this method. Due to the large number of images created in a short time, the images are saved to the database in the mosaic format. One mosaic-image contains all slices of one echo time for one repetition. Repetitions can be saved in multiple series if desired (Contrast card or BOLD card).

Prior to the first run of the sequence, the 3D standard shim procedure is performed to ensure best field homogeneity. As with standard EPI this option cannot be disabled. Due to the high switching rates used in EPI imaging, the peripheral nerve stimulation monitor will sometimes not allow the measurement to be performed with the parameters selected. In general, a lower bandwidth will decrease the stimulation and a different selection of the readout gradient may also help (read direction along L/R-axis shows generally the lowest stimulation).

2.3 New Parameters



Number of echoes: The number of echo-images per excitation can be set on the sequence card (part1) as the parameter contrasts. The number of echo-images can be selected between 1 and 8. The number of TE-times is changes accordingly. Please note that only the first echo time can be changed by the user. All other echo times are set to the minimum value according to the remaining selected parameters.

!!Attention!!: Even echo time 1 is adjusted to longer times without warning if required by another parameter! It is not set back to minimum if the parameter is changed back! Please check echo time 1 after changing other timing relevant parameters of the sequence.



Separate Correction: In the source code of the sequence card a new parameter 'Separate Correction' has been introduced. If this parameter is enabled (during compilation) each echo image is preceded by a new set of navigators used for the Nyquist ghost correction by the reconstruction. If the feature is disabled the same correction is used for all echo-images. The echo times are somewhat shorter when this feature is disabled, however, in general the image quality is better with the separate correction enabled (especially for high imaging bandwidth). In some cases the signal in the later echoes is too low and the reconstruction introduces artifacts in the images (small noisy stripes in the image) if this feature is selected. Please contact the developer if changes are needed.

T2*-Fit (parameter not shown): This new feature allows online calculation of I0- and T2*-maps from the echo images according to the model function shown in 1.2. I0 and T2* are determined for each voxel whose intensity exceeds 8% of the maximum intensity in the first echo. I0 and T2* of voxels with a signal intensity below this threshold are set to 0. **This option is automatically and only enabled when motion correction is selected.** The resulting T2*-maps are scaled such that an image intensity of 1000 corresponds to a T2* of 100ms. T2* is forced to lie within physiological limits ($0 < T2^* < 333\text{ms}$). Values higher than 333ms are set to 334ms to avoid very large signal intensity differences in case of fitting errors and allow a T2*-resolution of 0.1ms without overflows. Therefore, T2* maps of phantoms with very long T2 and good homogeneity may be calculated falsely. **The T2*-fit is only performed when Mosaic-images are created (for more than 1 slice)!**

Motion Correction: Similar to the motion correction in the a_ep2d_mosaic sequence a full 3D motion correction can be performed online. In the Multi-Echo EPI sequence this option also enables the T2*-Fit since the parameter maps are needed for motion correction. For most accurate results the motion correction is based on the I0-maps, which are used to determine the motion parameters. Subsequently these parameters are applied to reorient the T2*-maps. Only the motion corrected T2*-maps are written to the database together with the original images.

The **PACE**-variant of the sequence (separate sequence: os_mepi2d_pace_VA21) allows prospective motion correction. Thus, the volume is rotated and shifted after each measurement to ensure acquisition in the same patient based reference frame. Residual motion is corrected for in the processing. This option is only enabled when the motion correction is selected, which in turn enables the T2*-fit (which is necessary for motion correction (see above)). Be aware that the prospective motion correction stops if the motion between two scans is too large (as in the product EPI-PACE sequence).

Interpolation: The interpolation should be set to 'k-Space'! (see 3D Filter)

3D Filter: The filter has the same function as in standard EPI (remember: smaller values cause stronger spatial filtering!).

Multi-Echo EPI



t-Test: The online t-test and display work as in the original EPI sequence. However, the **t-test only works properly when motion correction is selected!** Alternatively, T2*-Maps can be processed within the BOLD-card.

A periodical trigger signal can be generated from the sequence in order to synchronize the experiment e.g. with an external stimulus generator. On the Special Card of the Sequence Tab are 2 additional parameters to control the execution of the trigger output: **Trigger Volumes to Skip** is the number of measurements at the beginning of the scan (excluding the dummy scans performed by the system, which are not recorded). **Volumes Per Trigger** is the number of measurements from trigger to trigger. The trigger signal is put out at the beginning of the measurements specified before the excitation of the first slice. OSC-signal 1 (in RF-cabinet output osc 1) is used (rather than the default, which is 0) in order to avoid trigger signals sent by the system, e.g. during adjustment.

2.4 Remarks on reconstruction performance

The number of images that can be acquired with the Multi-Echo EPI method is very high (up to 30 images per second for 64*64 matrix). The processing (especially T2*-Fit and Motion Correction) requires computationally intensive calculations and may require slower acquisition speeds (increased TR) to be performed online. If the reconstruction system lags behind the acquisition, the raw data is saved to disk during acquisition and reconstructed afterwards. Therefore, long reconstruction times after the scan are possible. The scan is not aborted! However, no new scan can be started during reconstruction! **Do not move the patient table to the home position during reconstruction, otherwise the reconstruction will stop and data is lost!**

The number of images that can be processed online depends on the reconstruction hardware. Up to 20 slices with 4 echoes and a TR of 3s can be acquired without motion correction and without long reconstruction delays.

2.5 Protocols

When the default protocol is created, motion correction and t-test are selected! Please adjust to your needs. Remember, t-test only works correctly when motion correction is enabled (due to inflexibility in the BOLD task card t-test could not be disabled for this condition).

As in the standard EPI sequence, the sequence automatically introduces 'dummy scans' at the beginning if more than one measurement is specified! The number of dummy scans depends on the TR.